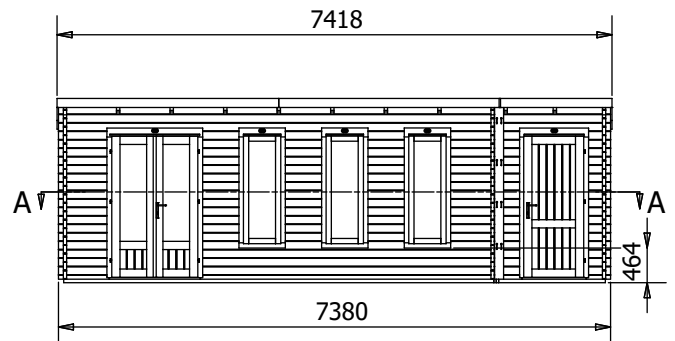
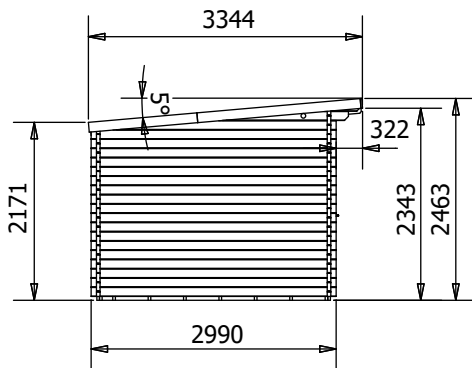
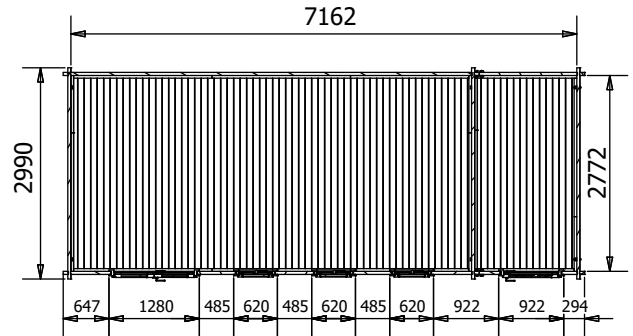


# EvilAmy Log Cabin

## W7.4m x D3.0m



## Specification

- **Overall External Dimensions:** 7.42m x 3.35m (24' 4.25" x 10' 12")
- **External Width:** 7.38 (24' 2.25")
- **External Depth:** 2.99m (9' 9.75")
- **Main Room Internal Width:** 5.67m (18' 7.25")
- **Side Room Internal Width:** 1.45m (4' 9")
- **Internal Depth:** 2.77m (9' 1")
- **Main Room Internal Area (m<sup>2</sup>):** 15.71m<sup>2</sup>
- **Store Room Internal Area (m<sup>2</sup>):** 4.02m<sup>2</sup>
- **Ridge Height:** 2.46m (8' 0.75")
- **Internal Eaves Height Front:** 2.32m (7' 7.25")
- **Internal Eaves Height Back:** 2.07m (6' 9.5")
- **Roof & Floor Thickness:** 19mm
- **Floor Bearers:** Pressure Treated

- **Door Height (Walkthrough Height):** 1.82m (5' 11")
- **Door Width (Walkthrough Width):** 1.11m (3' 7")
- **Door Locking System:** Industry Leading 4 Point Lock – 2 Cams, Latch & Hook Bolt
- **Window Locking System:** Multi Point with Mushroom Headed Espagnolettes
- **Window Opening Size:** 0.43m x 1.37m (1' 5" x 4' 5")
- **Glazing Options:** 24mm Double Glazing as Standard!
- **Ventilation:** 2 Plastic Vents Included
- **Approx. Assembly Time:** 2 Days\*

\*This is an approximate time only, based on 2 people. Assembly time may vary depending on season/weather conditions, foundation type, ability of those constructing, etc