

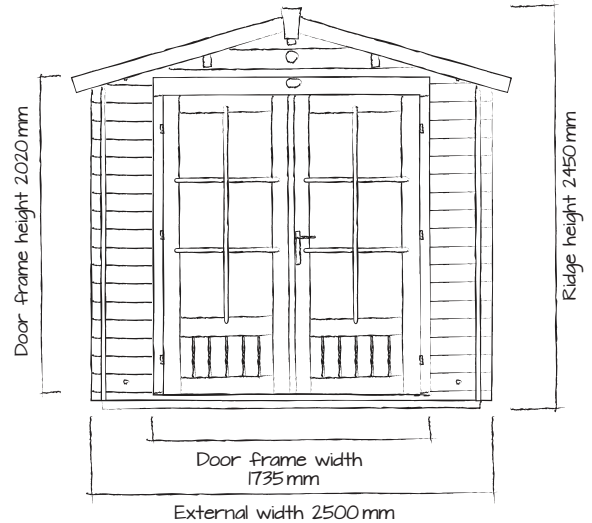


PremiumPlus Avon W2.5m x D3.0m

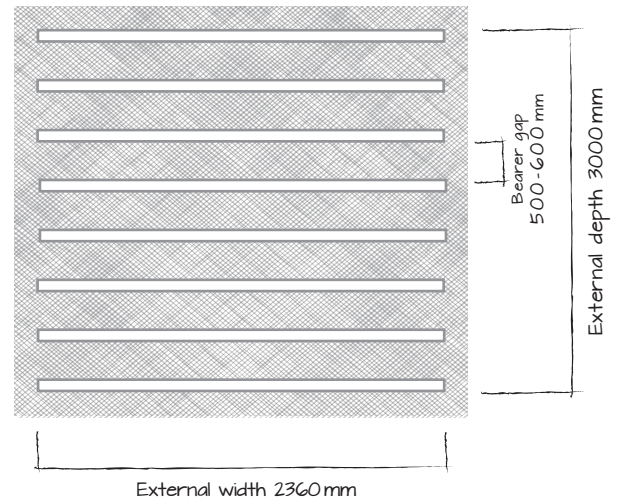
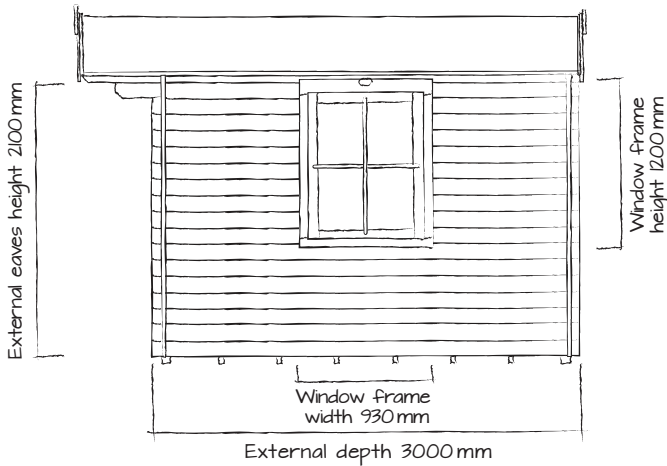
Everything you need for your
**PERFECT
GARDEN**



PremiumPlus Avon W2.5m x D3.0m



Use a flat level base allowing 100mm all around in addition to external cabin measurements.



DIMENSIONS:

External width 2500mm (8'2")
 External depth 3000mm (9'10")
 Ridge height 2450mm (8'0")
 External eaves height 2100mm (6'10")*
 Internal eaves height 2020mm (6'7")*

Door walkthrough height 1860mm (6'1")**
 Door opening size 1550mm x 1820mm (5'1" x 5'11")
 Window opening size 750mm x 970mm (2'5" x 3'2")
 Roof overhang width 500mm (1'8")

*Heights for 28mm/45mm walls.

**Assuming a 19mm floor.

WALL OPTIONS

28mm Tongue & Groove

| | |
|---------------------------------|--------------------|
| Internal width | 2300mm (7'6") |
| Internal depth | 2800mm (9'2") |
| Internal area (m ²) | 6.46m ² |
| Wall U-VALUE* | 2.59 |

FEATURES:

Windows: 1 Opening
 Walls: Spruce
 Glazing material: 4mm Toughened Glass
 Glazing options: Single or Double (24mm)
 Roof covering options: None, felt or shingles
 Roof material options: 19mm Tongue & Groove
 Floor material options: None, 19mm or 28 mm Tongue & Groove
 Floor bearers: Pressure Treated

Door style: Part glazed, Double
 Door locking system: Industry leading 4 point lock - 2 Cams, Latch & Hook Bolt
 Window locking system: Multi Point with Mushroom Headed Espagnolettes
 Gaskets: On Windows and Doors
 Adjustable Storm Brace: Included
 Treatment: Untreated

All measurements given are approximate.

*The U-Value is a standard measure of how fast heat will pass through a material. The lower the number, the better the insulation or construction.