

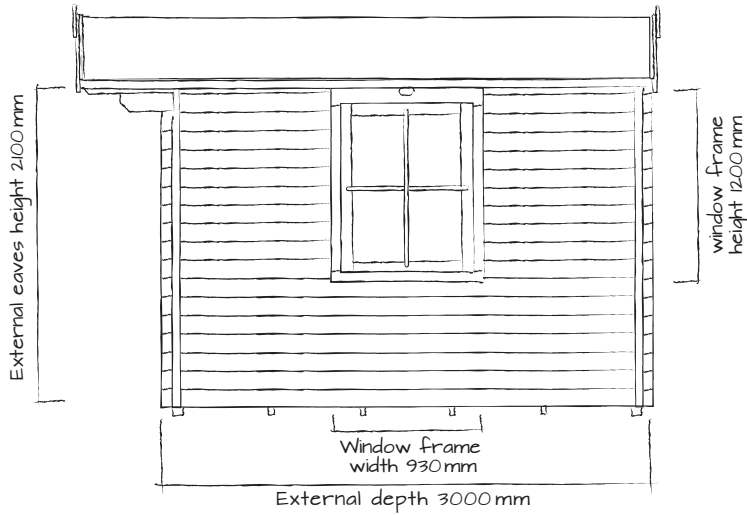
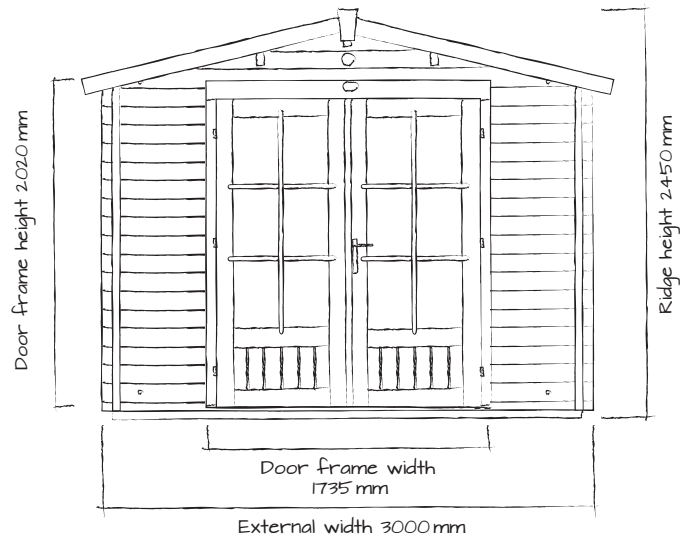


PremiumPlus Avon W3.0m x D3.0m

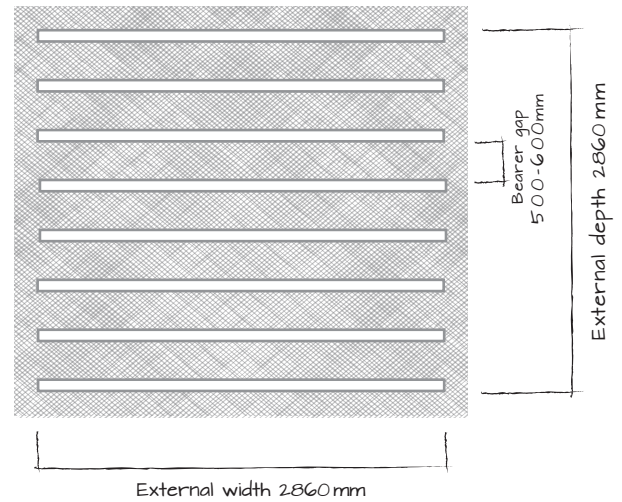
Everything you need for your  
**PERFECT  
GARDEN**



# PremiumPlus Avon W3.0m x D3.0m



Use a flat level base allowing 100mm all around in addition to external cabin measurements.



## DIMENSIONS:

External width 3000mm (9'10")  
 External depth 3000mm (9'10")  
 Ridge height 2450mm (8'0")  
 External eaves height 2100mm (6'10")\*  
 Internal eaves height 2020mm (6'7")\*

Door walkthrough height 1860mm (6'1")\*\*  
 Door opening size 1550mm x 1820mm (5'1" x 5'11")  
 Window opening size 750mm x 970mm (2'5" x 3'2")  
 Roof overhang width 500mm (1'8")

\*Heights for 28mm/45mm walls.

\*\*Assuming a 19mm floor.

WALL OPTIONS	28mm Tongue & Groove	45mm Tongue & Groove	130mm DualTherm	130mm TripleTherm
Internal width	2800mm (9'2")	2770mm (9'1")	2600mm (8'6")	2600mm (8'6")
Internal depth	2800mm (9'2")	2770mm (9'1")	2600mm (8'6")	2600mm (8'6")
Internal area (m <sup>2</sup> )	7.86m <sup>2</sup>	7.67m <sup>2</sup>	6.76m <sup>2</sup>	6.76m <sup>2</sup>
Wall U-VALUE*	2.59	1.93	1.28	0.29

## FEATURES:

Windows: 1 Opening  
 Walls: Spruce  
 Glazing material: 4mm Toughened Glass  
 Glazing options: Single or Double (24mm)  
 Roof covering options: None, felt or shingles  
 Roof material options: 19mm Tongue & Groove  
 Floor material options: None, 19mm or 28 mm Tongue & Groove  
 Floor bearers: Pressure Treated

Door style: Part glazed, Double  
 Door locking system: Industry leading 4 point lock - 2 Cams, Latch & Hook Bolt  
 Window locking system: Multi Point with Mushroom Headed Espagnolettes  
 Gaskets: On Windows and Doors  
 Adjustable Storm Brace: Included  
 Treatment: Untreated

All measurements given are approximate.

\*The U-Value is a standard measure of how fast heat will pass through a material. The lower the number, the better the insulation or construction.