

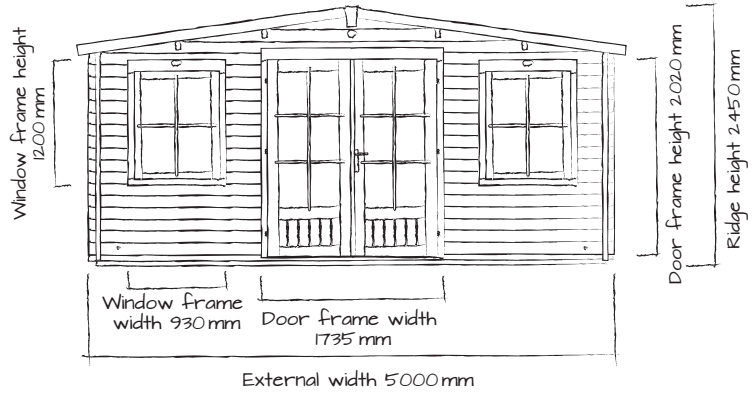


PremiumPlus Severn Grande W5.0m x D8.0m

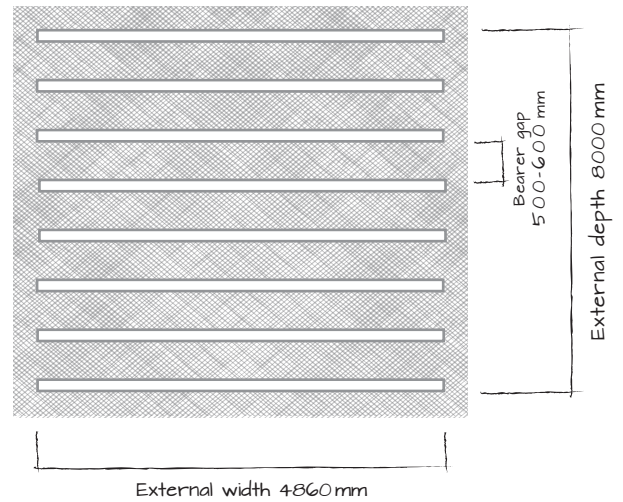
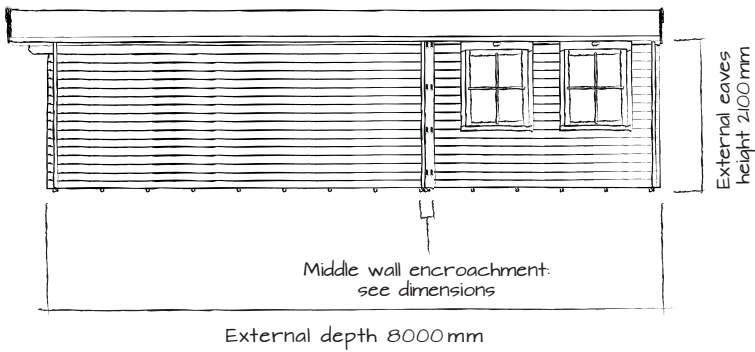
Everything you need for your
**PERFECT
GARDEN**



PremiumPlus Severn Grande W5.0m x D8.0m



Use a flat level base allowing 100mm all around in addition to external cabin measurements.



DIMENSIONS:

External width: 5.00m (16'4")
 External depth: 8.00m (26'2")
 Ridge height: 2.45m (8'0")
 External eaves height: 2.10m (6'10")*
 Internal eaves height: 2.02m (6'7")*
 Middle wall encroachment: 0.8m, each side

Door walkthrough height: 1.86m (6'1")**
 Door opening size: 1.55m x 1.82m (5'1" x 5'11")
 Window opening size: 0.74m x 0.96m (2'5" x 3'2")
 Roof overhang width: 0.50m (1'7")

*Heights for 28mm/45mm walls.

**Assuming a 19mm floor.

WALL OPTIONS	28mm Tongue & Groove	45mm Tongue & Groove	130mm Dual Therm	130mm Triple Therm
Internal width	4.80m (15'8")	4.77m (15'7")	4.60m (15'1")	4.60m (15'1")
Internal depth	7.80m (25'7")	7.77m (25'5")	7.60m (24'11")	7.60m (24'11")
Internal area (m ²)	37.49m ²	37.06 ²	34.96m ²	34.96m ²
Wall U-VALUE*	2.59	1.93	1.28	0.29

FEATURES:

Windows: 4 Opening
 ALL timber: 100% Spruce
 Glazing material: 4mm Toughened Glass
 Glazing options: Single or Double (24mm)
 Roof covering options: None, felt or shingles
 Roof material options: 19mm Tongue & Groove
 Floor material options: None, 19mm or 28 mm Tongue & Groove
 Floor bearers: Pressure Treated

Door style: Part glazed, Double
 Door locking system: Industry leading 4 point lock - 2 Cams, Latch & Hook Bolt
 Window locking system: Multi Point with Mushroom Headed Espagnolettes
 Gaskets: On Windows and Doors
 Adjustable Storm Brace: Included
 Treatment: Untreated

All measurements given are approximate.

*The U-Value is a standard measure of how fast heat will pass through a material. The lower the number, the better the insulation or construction.